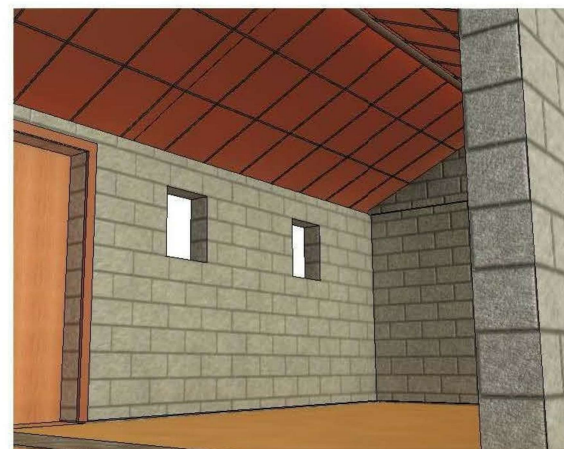
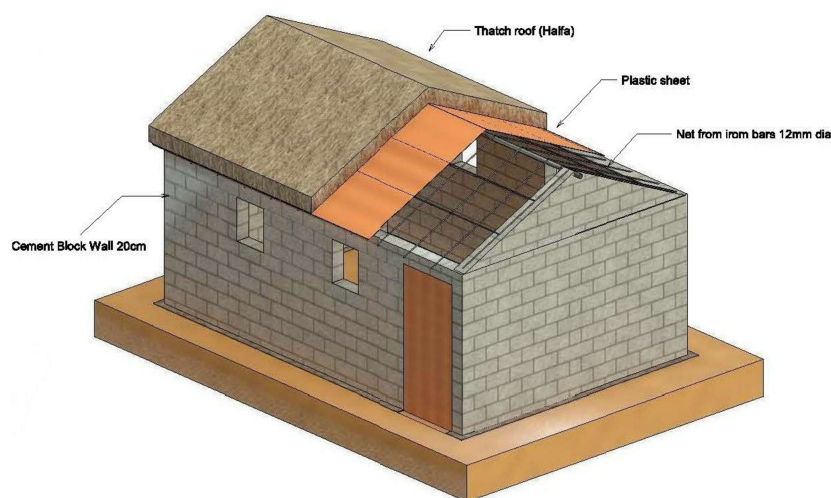


1 3D View Outside



2 3D view from Inside



4 3D View Shell

INTERSS

### Project Name

Supply and construction of 150  
Transitional Shelter  
in Abbs District, Hajjah Gov

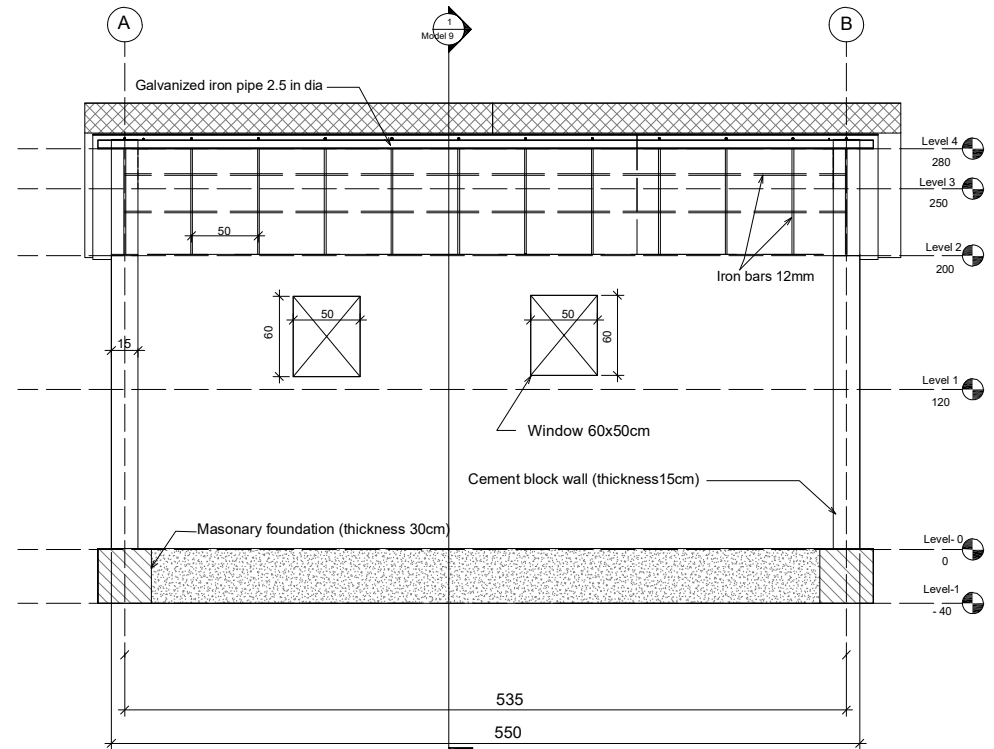
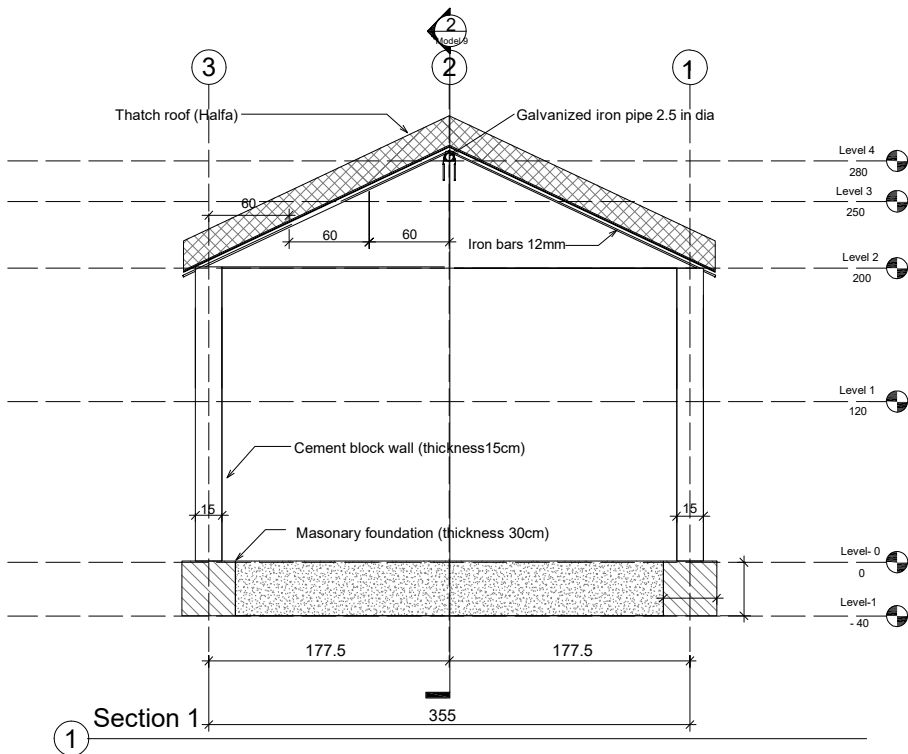
Tihama Bearing Wall  
Model 9

Type of Layout 3D Views

Layout No. 1 of 4

Life-saving and Life-sustaining  
Integrated WASH and Shelter  
Emergency Intervention in Abs and  
Ku'aydinah Districts of Hajjah  
Governorate, Yemen.

Funded by YHF  Yemen  
Humanitarian  
Fund



**INTER****S**

### Project Name

Supply and construction of 150  
Transitional Shelter  
in Abbs District, Hajjah Gov

Tihama Bearing Wall  
Model 9

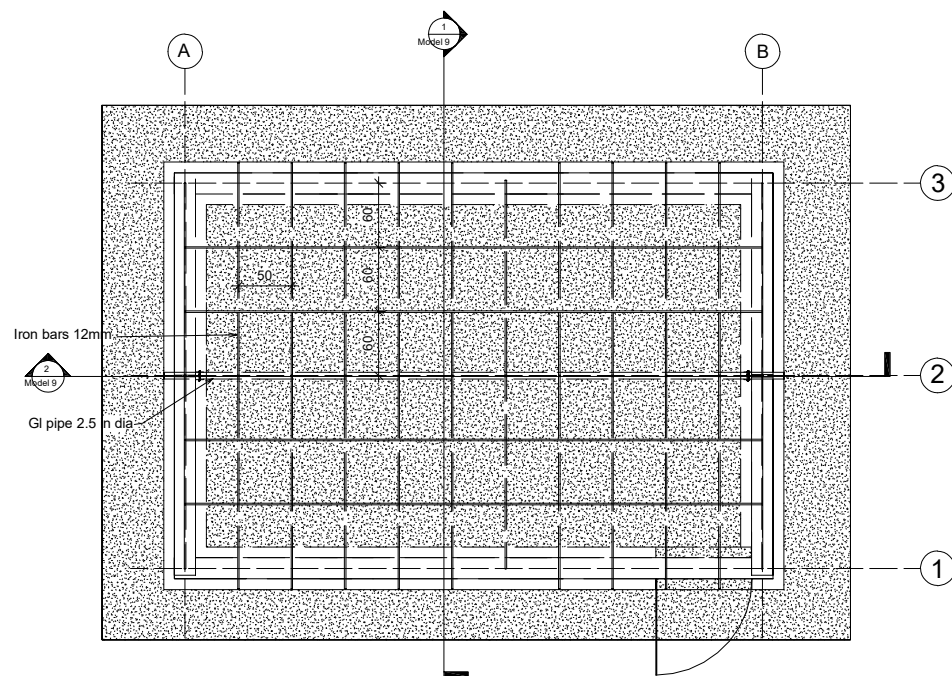
Type of Layout Sections

Layout No. 2 of 4

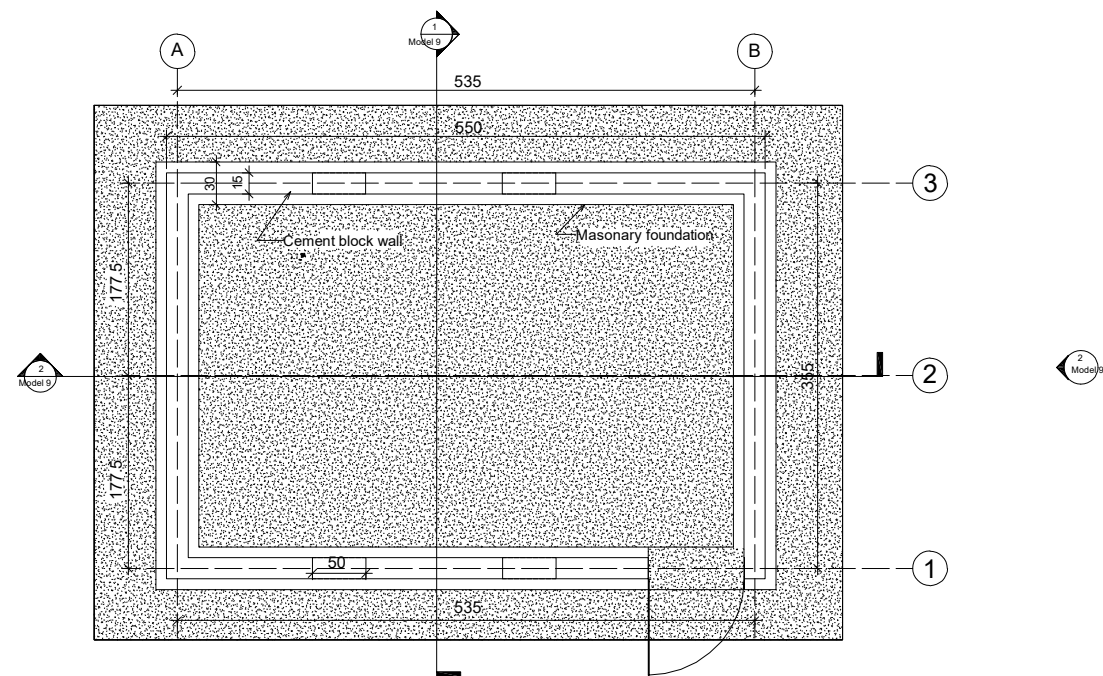
Scale 1:20

Life-saving and Life-sustaining  
Integrated WASH and Shelter  
Emergency Intervention in Abs and  
Ku'aydinah Districts of Hajjah  
Governorate, Yemen.

Funded by YHF  Yemen Humanitarian Fund



① Level 3



② Level 0

**INTERSS**

### Project Name

Supply and construction of 150  
Transitional Shelter  
in Abbs District, Hajjah Gov

Tihama Bearing Wall  
Model 9

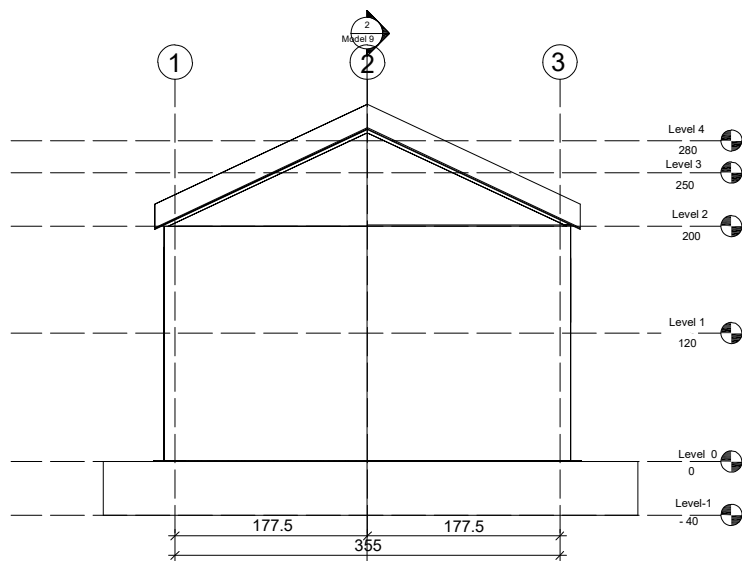
Type of Layout Plans

Layout No. 3 of 4

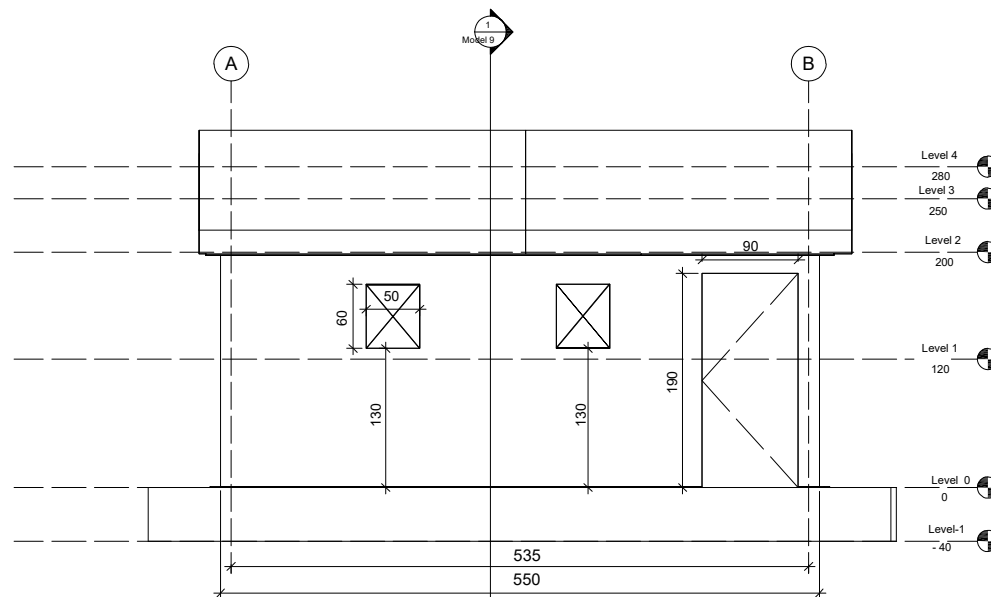
Scale 1:25

Life-saving and Life-sustaining  
Integrated WASH and Shelter  
Emergency Intervention in Abs and  
Ku'aydinah Districts of Hajjah  
Governorate, Yemen.

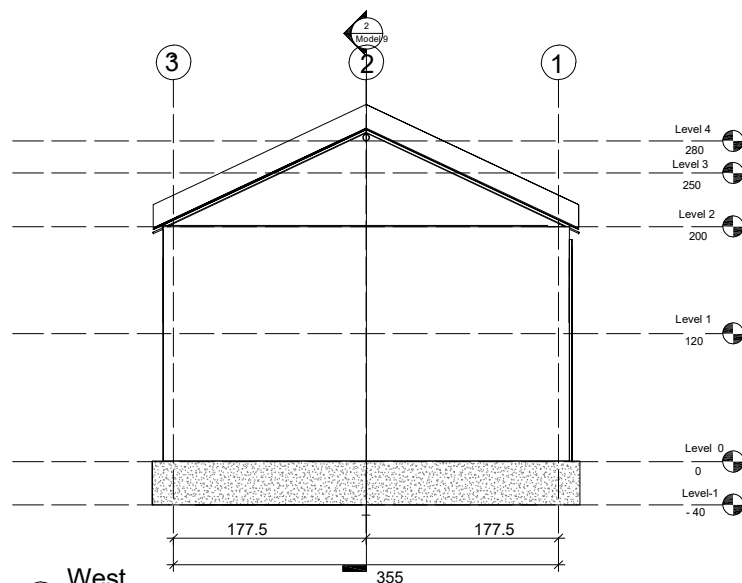
Funded by YHF YHF



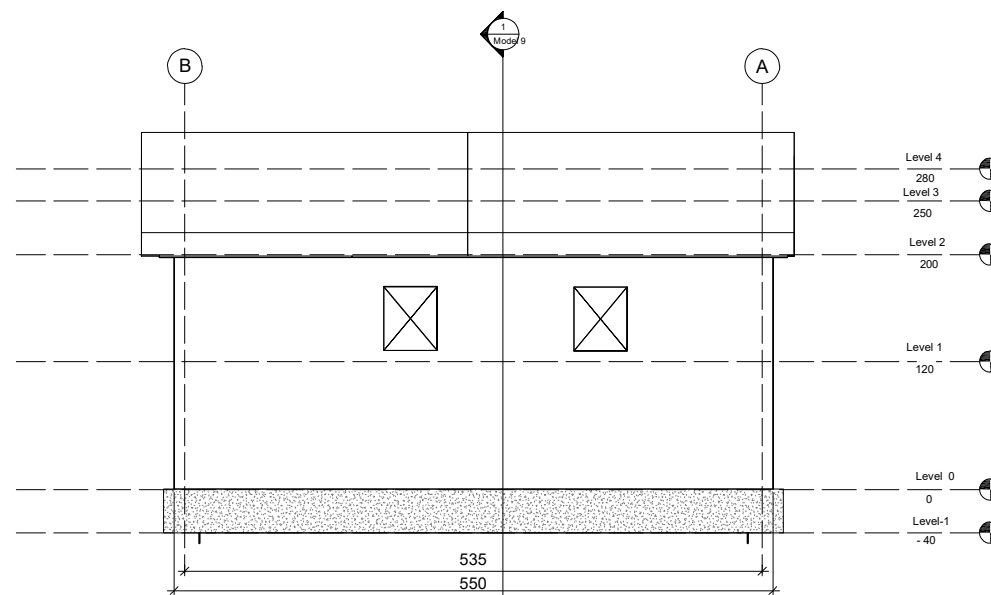
① East



② South



③ West



④ North

INTERS

### Project Name

Supply and construction of 150  
Transitional Shelter  
in Abbas District, Hajjah Gov

Tihama Bearing Wall  
Model 9

Type of Layout Elevation

Layout No. 4 of 4

Scale 1:25

Life-saving and Life-sustaining  
Integrated WASH and Shelter  
Emergency Intervention in Abs and  
Ku'aydinah Districts of Hajjah  
Governorate, Yemen.

Funded by YHF 